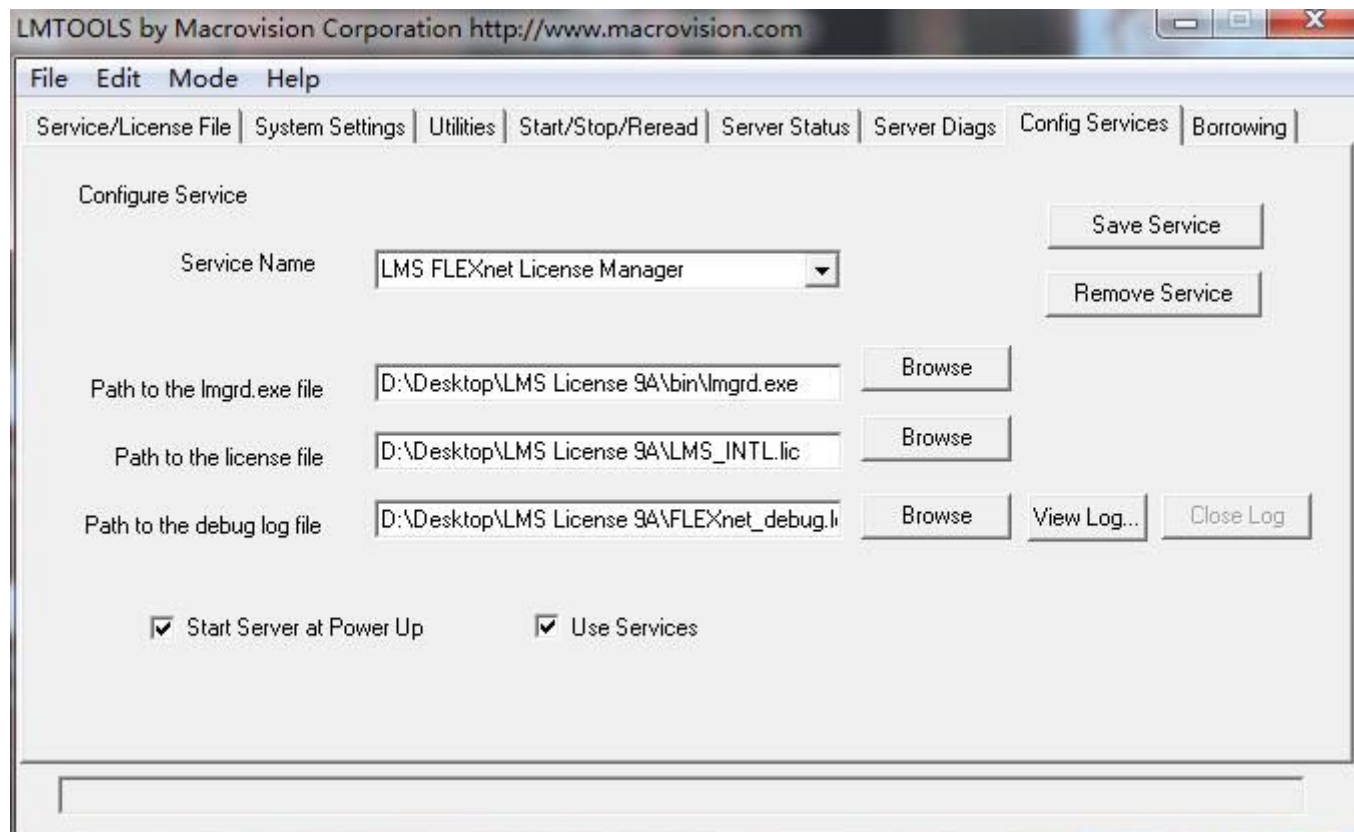


1. 文件按照光盘中的标准教程安装。程序中各个选项卡的填写如下图所示。
2. Service name 命名为 LMS FLEXnet License Manager
3. License 文件以及 Imgrd.exe 文件的路径中最好不含有英文。License 文件等使用本文件夹附带的。
4. 设置好之后如果运行不通可以尝试重启电脑。
5. 运行中的错误可以参照 debug.log 文件中提示的错误信息进行修改（点击 View Log）。



File Edit Mode Help

Service/License File | System Settings | Utilities | Start/Stop/Reread | Server Status | Server Diags | Config Services | Borrowing

Allows the diagnosis of problems when unable to obtain a license.

Feature Name

Perform Diagnostics

Diagnostics

FLEXnet diagnostics on Tue 11/24/2015 16:51

License file: D:\Desktop\LMS License 9A\LMS_INTL.lic

"lms_acfocstat" v9.0, vendor: LMS_INTL
License server: jkz-PC
floating license no expiration date

This license can be checked out

Using License File: D:\Desktop\LMS License 9A\LMS_INTL.lic

File Edit Mode Help

Service/License File | System Settings | Utilities | Start/Stop/Reread | Server Status | Server Diags | Config Services | Borrowing

Helps to monitor the status of network licensing activities

Perform Status Enquiry

Options

Individual Daemon

Individual Feature

Server Name

Using License File: D:\Desktop\LMS License 9A\LMS_INTL.lic

File Edit Mode Help

Service/License File System Settings Utilities Start/Stop/Reread Server Status Server Diags Config Services Borrowing

FLEXnet license services installed on this computer



Start Server

Stop Server

ReRead License File

Advanced settings >>

Force Server Shutdown

NOTE: This box must be checked to shut down a license server when licenses are borrowed.

Using License File: D:\Desktop\LMS License 9A\LMS_INTL.lic

File Edit Mode Help

Service/License File System Settings Utilities Start/Stop/Reread Server Status Server Diags Config Services Borrowing

Find out the version of FLEXnet Licensing linked with a file. Useful for diagnosing errors.

File Name:

Browse

Find Version

Set the specified vendor name or all vendors to a new path location.

Vendor Name:

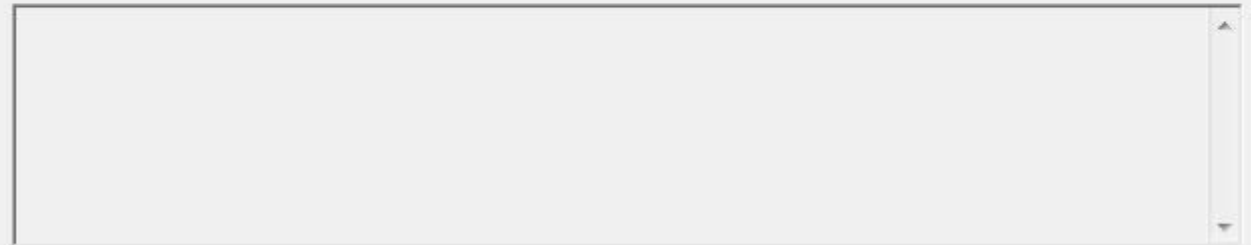
Path: ...

NOTE: Impath cannot change environment settings, only Windows registry.

List All Vendor Paths

Add Vendor Path

Override Path



Using License File: D:\Desktop\LMS License 9A\LMS_INTL.lic

File Edit Mode Help

Service/License File | System Settings | Utilities | Start/Stop/Reread | Server Status | Server Diags | Config Services | Borrowing

Hostid Settings

Computer/Hostname

Include Domain

Username

CPU ID

IP Address

Ethernet Address

Disk Volume Serial Number

FLEXID

Time Settings

System Time Zone

GMT Time

Difference From UCT

MSDOS Time

Local Time


Windows Directory

File Edit Mode Help

Service/License File | System Settings | Utilities | Start/Stop/Reread | Server Status | Server Diags | Config Services | Borrowing

Services allow FLEXnet Servers to run in the background.

Server List



Configuration using License File

Configuration using Services

LMS FLEXnet License Manager

LMTTOOLS ignores license file path environment variables

To borrow licenses (with applications and licenses that support borrowing):

- (1) Enter the date (and optionally time) you want the licenses to be returned.
- (2) Use all applications you want to borrow while you're on the network.
- (3) Disconnect.

Borrow expires on the date and time specified, or end-of-day, if no time is specified.

<input type="button" value="Set Borrow Expiration"/>	Vendor Name: <input type="text" value="All"/>
	Return Date: <input type="text"/> dd-mmm-yyyy Return Time: <input type="text"/> hh:mm

<input type="button" value="Return Borrowed Licenses Early"/>	Display Name: <input type="text"/> (optional)	Feature Name: <input type="text"/>
---	--	------------------------------------